

May 2026

# MANAGER REPORT

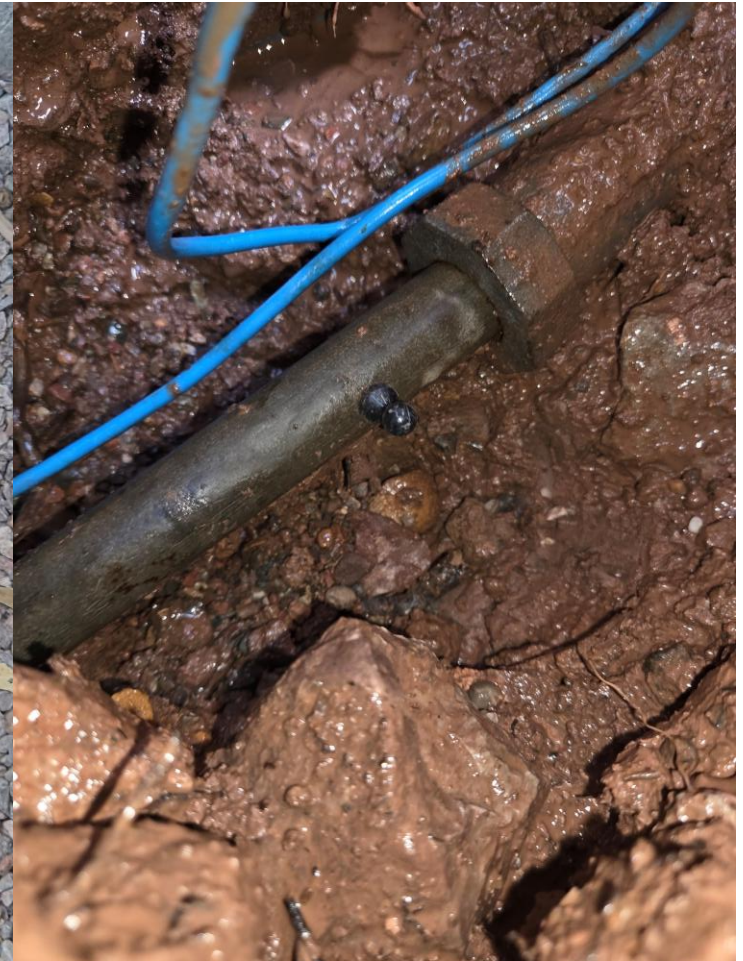
# Monthly Report

The General Manager's Report provides the Board of Directors with background information regarding issues and projects that staff is working on and the timing and sequencing of some of those projects. The

- **Water Quality**
- **Work Orders**
- **Total Production**
- **Capital Improvement**

# Water Quality

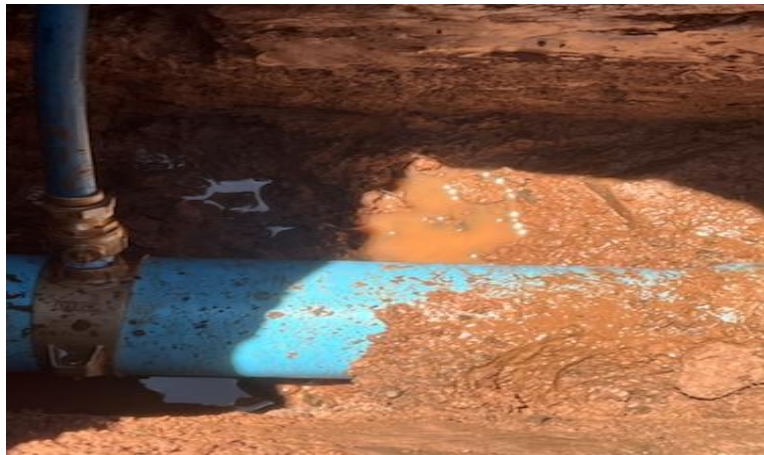
- Monthly Bacteriological Sampling (MSSP) – 9 absence reported
- MAP – 54 samples, VOC,IOC, NO3, NO4
- Lead and Copper Pot Holing
  - 84 galvanized services
  - 1584 Verified Non Pb/Cu
  - 1569 Unknown





# Work Orders

- Service Orders - 134
- Line Locates (Blue Stake) - 40
- Main Breaks - 3
- Corrective Maintenance – 30
- Meters Read - 3361



# Zero Reads

Pine Strawberry Water Improvement District			Days in Month	30	
			Month Ending:	4/30/2026	
<b>Consumption &amp; Production Analysis</b>					
Note: Total production equals production less transfers out and Known water loss/Usage					
<u>Consumption Summary</u>			<u>Production Summary</u>		
Total Gallons Consumed		5,676,449	Total Gallons Pumped		7,560,099
Total Revenue	\$245,619.92				
Base Rate (unadj)	\$213,144.60			PINE	STRAWBERRY
Tier Revenue	\$32,475.32		Wells	5,297,511	1,319,775
			WSA	1,102,182	1,515
Total Meters Read	3,379		Transfer Out	(1,883,203)	-
Zero Reads		658	Transfer In	-	1,791,000
Percent of total		19%	Known Loss/Usage	(55,681)	(13,000)
			Total Production	4,460,809	3,099,290
<u>Known Water Loss/Usage</u>					
Percent		-25%			
Gallons		1,883,650			

# Total Production

## March 2026

Consumption Summary		
Total Gallons Consumed		5,964,252
Total Revenue	\$246,034.58	
Base Rate (unadj)	\$213,062.33	
Tier Revenue	\$32,972.25	
Total Meters Read	3,372	
Zero Reads	658	
Percent of total	20%	
Known Water Loss/Usage		
Percent	-24%	
Gallons	1,907,788	

## February 2026

Consumption Summary		
Total Gallons Consumed		4,112,104
Total Revenue	\$232,562.49	
Base Rate (unadj)	\$213,081.40	
Tier Revenue	\$19,481.09	
Total Meters Read	3,382	
Zero Reads	915	
Percent of total	27%	
Known Water Loss/Usage		
Percent	-33%	
Gallons	2,055,420	

## January 2026

Consumption Summary		
Total Gallons Consumed		4,700,015
Total Revenue	\$234,985.37	
Base Rate (unadj)	\$212,841.80	
Tier Revenue	\$22,143.56	
Total Meters Read	3,373	
Zero Reads	759	
Percent of total	23%	
Known Water Loss/Usage		
Percent	-45%	
Gallons	3,787,099	



# Water Conservation Campaign

- Pine Strawberry Elementary – Friday
- Water Conservation Level 2





# Capitol Improvement